

MORPHOMANAGER

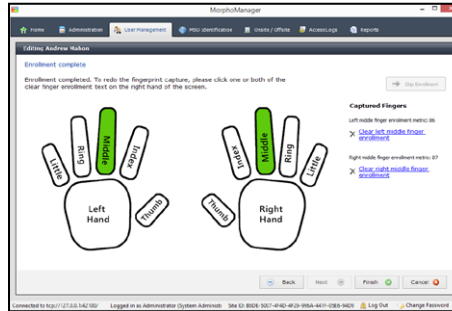
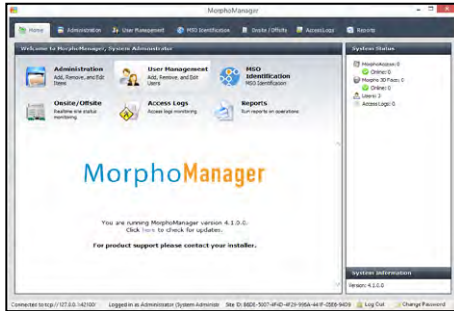
SEAMLESS INTEGRATION OF BIOMETRICS AND ACCESS CONTROL



Combined with Morpho Terminals, MorphoManager provides a seamless, comprehensive solution for Time & Attendance, Access Control or combined applications. MorphoManager offers Group-based settings, Centralized management, Comprehensive reporting and Easy configuration.

- Integrate biometrics and access control
- Enroll fingerprint, finger vein/print and 3D face recognition in single system
- Encode MiFare, DESFire and iClass smart cards

MORPHOMANAGER



No More Double Data Entry

A shared view of access control users / card holders and biometrics.

Integrated systems include:

- ABC Financial
- AMAG Symmetry
- Appollo APACS
- Blackboard Transact
- CISCO CPAM
- DSX WinDSX
- Entry Master
- Honeywell WinPAK (SE/PE)
- Identocard Premisys
- Infinius Intelli-M
- Inner Range Integriti
- Jonson Controls P2000
- Kantech Entrapass
- Keyscan System VII
- Lenel OnGuard
- Matrix Systems
- Paxton Net2
- S2 Netbox
- Schneider Electric Continuum
- Software House C-Cure 9000

Features

- Use as stand-alone fingerprint access control or use with existing access system
- Supports up to 100,000 users
- Supports up to 5,000 biometric devices
- Stores 1,000,000 Access Logs
- Onsite/Offsite reporting
- Connect to readers via LAN, WAN or WiFi
- Multiple Authentication Modes - Fingerprint, Card, PIN
- Photo option with any USB camera
- Print identity cards from customizable templates
- Full reporting tools
- Reduced install and setup time
- Single interface
- No duplication of effort or enrollment
- Intuitive and user-friendly
- Highly secure access control
- Accurate time recording and reporting
- All-in-one solution
- Wiegand or closed contact output
- Automatically export transaction history for import into payroll packages



MorphoTrak

Contact us: (800) 601-6790 - www.morphotrak.com
113 South Columbus Street 4th Floor
Alexandria, Virginia U.S.A. 22314 info@morphotrak.com
© 2012 Identity One - REV.250914

